

MINIRÒ QUBE

VALIDATABLE ROTARY HEATSEALER
VARIABLE SPEED
UDI READY INTEGRATED PRINTING SYSTEM
DOUBLE TOUCH SCREEN
IP AND NETWORKING CONNECTIVITY

ENGINEERED TO EXCEED THE MOST RIGOROUS STANDARDS
IN MEDICAL AND LIFE SCIENCE INDUSTRIES

EXPERIENCE SUPERIOR SEALING WITH CUTTING-EDGE TECHNOLOGIES WITH THE FOREFRONT OF TECHNOLOGICAL INNOVATION IN HEAT SEALERS FOR MEDICAL AND LIFE SCIENCE APPLICATIONS.

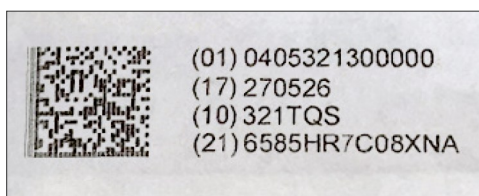
IN COMPLIANCE WITH THE MOST STRINGENT INTERNATIONAL SECURITY STANDARDS.

KEY FEATURES

HIGH-PERFORMANCE 9 MM ROTARY SEALING
INTEGRATED INKJET PRINTING (UDI / DATA MATRIX)
DUAL TOUCHSCREEN FOR PROGRAMMING AND CONTROL
VARIABLE SPEED AND MULTI-MATERIAL HANDLING
EXTENSIVE CONNECTIVITY

NEW INTEGRATED **INKJET MARKER** FOR UTMOST SAFE PRODUCT LABELING SOLUTION, READY TO MEET ANY FUTURE CHALLENGE. GANDUS UDI READY TECHNOLOGY ENABLES COLLECTION OF RELEVANT DATA VIA TOUCH SCREEN, USB, ETHERNET, AGGREGATES THEM AND GENERATES A DATA MATRIX CODE TO BE PRINTED DIRECTLY ON THE POUCH.

DESIGNED AND MANUFACTURED IN MINIRÒ QUBE C AND MINIRÒ QUBE P VERSIONS, WITH ADVANCED FEATURES AND PRECISE SEALING CAPABILITIES TO ENABLE SUPERIOR RESULTS ON MULTIPLE MATERIALS, ENSURING HIGHEST INTEGRITY AND SAFETY.



MINIRÒ QUBE

ENGINEERED TO EXCEED THE MOST RIGOROUS STANDARDS
IN MEDICAL AND LIFE SCIENCE INDUSTRIES

BENEFITS AND ADVANTAGES

PACKAGING PROCESS CONFORMITY

PERFECT MATCH WITH WORLD HEALTH ORGANISATION GUIDELINE REQUIREMENTS, WORLD FEDERATION FOR HOSPITAL STERILISATION SCIENCES (WFHSS) NEW GUIDELINES; EU GMP ANNEX 1 STANDARDS: MANUFACTURE OF STERILE MEDICINAL PRODUCTS.

VALIDATABLE SEALING PROCESS

VALIDATABLE SEALING PROCESS ACCORDING TO EN ISO 11607-2 AND INTERNATIONAL GUIDANCE ISO/TS 16775

EXCELLENT SEALING PERFORMANCE

THE INNOVATIVE GANDUS SEALING SYSTEM IS ENGINEERED TO ENSURE EXCELLENT PERFORMANCE, PROVIDING SECURE AND UNIFORM HERMETIC SEAL THAT MEETS THE PROCESS REQUIREMENTS OF ALL MOST WIDELY USED STERILE HEAT-SEALABLE BARRIER SYSTEMS, INCLUDING UNCOATED TYVEK[®] MATERIALS AND POLYOLEFIN MATERIALS.

FLEXIBLE OPERATION

SEALING DATA CAN BE SET VIA TOUCHSCREEN, VNC CONNECTION, MODBUS TCP/IP PROTOCOL.

AVAILABLE AS A BENCHTOP HEAT SEALER OR MOUNTED ON A HEIGHT- AND TILT-ADJUSTABLE WHEELED STAND.

BOTH BENCHTOP AND ON STAND HEAT SEALER CAN BE EQUIPPED WITH CONVEYOR BELTS OF VARIOUS SIZES.

VARIABLE SPEED

ALLOWS FOR QUALITY OPTIMIZATION AND PRODUCTION EFFICIENCY BY ADJUSTING SEALING SPEED ACCORDING TO THE MATERIAL USED AND IMPROVING MANAGEMENT OF PEAK WORKLOADS.

SAFETY

TOP NOTCH SAFETY, GUARANTEED BY STAINLESS STEEL COVER AND 9 MM WIDE FLAT SEAL (KNURLED SEAL OPTION) FOR A PERFECT SEAL STRENGTH WITH AN EASY AND SAFE PEELABILITY.

AUTOMATIC STOP OF OPERATION IF THE TEMPERATURE DEVIATES FROM THE SET RANGE.

TRACEABILITY

THE TECHNOLOGY ENABLES COMPLETE TRACEABILITY OF ALL CRITICAL SEALING PARAMETERS THROUGHOUT THE ENTIRE PROCESS. PARAMETERS CAN BE MONITORED AND SAVED TO A USB PENDRIVE OR REMOTELY TO A PC. TO BE EXPORTED VIA MODBUS TCP/IP PROTOCOL.

UDI READY TECHNOLOGY

THE TECHNOLOGY WITH INTEGRATED INKJET PRINTER ALLOWS ALL RELEVANT DATA TO BE AGGREGATED AND A DATA MATRIX CODE TO BE GENERATED, WHICH IS PRINTED DIRECTLY ONTO THE POUCH.

DATA CAN BE ENTERED VIA TOUCHSCREEN, USB, OR ETHERNET.

VERSATILE PRINTING CAPABILITIES

PRINTING CAN BE PERFORMED ON EITHER THE TRANSPARENT SIDE OR THE POROUS SIDE OF THE STERILE BARRIER FILM. A DEDICATED VENTILATION SYSTEM IN THE PRINTING AREA ENSURES PERFECT INK DRYING. DIFFERENT TYPES OF INK ARE AVAILABLE DEPENDING ON THE TYPE OF PRINTING SUBSTRATE. OUR TECHNICIANS ARE AVAILABLE TO ASSIST YOU IN THIS REGARD.

MINIRÒ QUBE

ENGINEERED TO EXCEED THE MOST RIGOROUS STANDARDS
IN MEDICAL AND LIFE SCIENCE INDUSTRIES

DOUBLE TOUCH SCREEN

4.3" COLOUR TOUCH SCREEN FOR SEALING SEALING DATA SETTING AND TRACEABILITY, MAKING ANY OPERATION MORE AND MORE USER FRIENDLY.

4.3" COLOUR TOUCH SCREEN TO SET THE INTEGRATED INKJET PRINTING SYSTEM.

CONNECTIVITY

WIDE CONNECTIVITY IP AND NETWORKING CAPABILITIES ALLOWED BY USB AND RJ45 SERIAL PORTS ALSO FOR INCLUDED ETHERNET CONNECTION.

DATA SETTING VIA VNC CONNECTION.

REMOTE DATA EXCHANGE IN7OUT VIA MODBUS TCP/P PROTOCOL

MINIRÒ QUBE CAN BE CONNECTED TO ANT COMMERCIALY AVAILABLE MONITOR.

CONVEYOR BELT WITH SPEED SYNCHRONIZED TO THE HEAT SEALER

MOTORIZED WHEELED STAND

MOTORIZED SUPPORT FOR AN EASY AND QUICK ADAPTABILITY OF BOTH SEALING SYSTEM AND CONVEYOR BELT TO THE MOST SPECIFIC REQUIREMENTS.

FRAME MADE OF AISI 304 STAINLESS STEEL.

LIFTING COLUMN MADE OF ALUMINUM.

ELECTRIC VERTICAL ADJUSTMENT VIA CONTROL PANEL AND TILT ADJUSTMENT VIA HANDWHEEL.



TESTING AND VALIDATION SERVICES

GANDUS SALDATRICI OFFERS A RANGE OF TESTING AND VALIDATION SERVICES TO ENSURE SAFE AND RELIABLE DAILY MONITORING OF MEDICAL SEALING MACHINES FOR STERILIZATION POUCHES IN ACCORDANCE WITH ISO 11607.1.2 AND ASTM F1929 STANDARDS.

MINIRÒ QUBE

ENGINEERED TO EXCEED THE MOST RIGOROUS STANDARDS
IN MEDICAL AND LIFE SCIENCE INDUSTRIES

TECHNICAL DATA	MINIRÒ QUBE
SEALABLE MATERIALS	<p>SEALABLE PAPER POUCHES ACCORDING TO EN ISO 11607-1/EN 868-4</p> <p>SEALABLE POUCHES AND REELS ACCORDING TO EN ISO 11607-1/EN 868-5 MADE OF FILM AND PAPER ACCORDING TO EN 868-3</p> <p>SEALABLE POUCHES AND REELS ACCORDING TO ISO EN 11607-1/EN 868-5 MADE OF FILM AND UNCOATED MATERIALS MADE OF POLYOLEFINS ACCORDING TO EN 868-9 (E.G. TYVEK[®])</p> <p>SEALABLE POUCHES AND REELS ACCORDING TO ISO 11607-1/EN 868-5 MADE OF PP FLEECE OR PP NONWOVEN</p> <p>PEELABLE POUCHES PA/PE</p> <p>BAGS MADE OF THERMOPLASTIC MATERIALS, HEADER BAGS (PP, PE, PVC), PEELABLE FILMS IN PA/PE, LAMINATES INCLUDING ALUMINUM LAMINATES</p>
COVER AND FRONT AREA	AISI 304 STAINLESS STEEL
FRAME	STEEL WITH EPOXY COATING
SEALING PROCESS	ROTARY ISO 11607.2 VALIDATABLE MICROPROCESSOR CONTROLLED
SEALING	<p>FLAT (OPTION KNURLED)</p> <p>COMPLIANCE DIN 58953 P-7 RULES</p>
SEALING HEIGHT	9 MM
SEAL DISTANCE FROM THE EDGE	MM 0-35 ADJUSTABLE
SEALING SPEED	3 – 14 M/MIN VARIABLE CONTROLLED
SEALING PRESSURE	<p>F_{NOMINAL} = 100 N</p> <p>MONITORED</p>
SEALING TEMPERATURE	<p>ELECTRONIC SEALING TEMPERATURE CONTROL 10-210 °C ± 1%</p> <p>AUTOMATIC STOP OF OPERATION IF THE TEMPERATURE DEVIATES FROM THE SET RANGE +/- 5°C VS SET SEALING TEMPERATURE</p>
CONNECTIVITY	<p>1 SERIAL PORT RS232</p> <p>2 USB PORTS</p> <p>1 RJ45 PORT (ETHERNET)</p> <p>PROVISION FOR CONNECTION TO TRANSPORT BELT (OPTIONAL)</p>
SEALER SETTING	<p>PARAMETERS SETTING VIA TOUCH SCREEN 4,3" AND VIA BARCODE READER (OPTIONAL)</p> <p>SETTING VIA VNC CONNECTION TO SEALING CONTROL PANEL</p> <p>REMOTE DATA EXCHANGE IN/OUT VIA MODBUS TCP/IP PROTOCOL</p> <p>ACCESS PASSWORD</p>
DISPLAY	<p>4.3" COLOUR TOUCH SCREEN FOR SEALING DATA SETTING AND PARAMETER TRACEABILITY</p> <p>4.3" COLOUR TOUCH SCREEN FOR INTEGRATED INKJET MARKER SETTING</p>

MINIRÒ QUBE

ENGINEERED TO EXCEED THE MOST RIGOROUS STANDARDS
IN MEDICAL AND LIFE SCIENCE INDUSTRIES

TECHNICAL DATA	MINIRÒ QUBE
CONTROLS AND SAFETY	<p>DIAGNOSTICS</p> <p>COMPLIANCE TO UNI EN ISO 11607.2 STANDARDS</p>
FUNCTIONS	<p>64 SEALING RECIPES</p> <p>40 OPERATORS NAMES</p> <p>LIBRARY WITH 40 BATCH CODES</p> <p>120 CATALOGUES</p> <p>RECIPES, OPERATORS, BATCH CODES IMPORT/EXPORT VIA USB</p> <p>TRACEABILITY FILES RECORDING IN LOCAL MEMORY; AVAILABLE EXPORT ON USB</p> <p>GENERAL COUNTERS</p> <p>MULTILANGUAGE MENÙ WITH ICONS</p> <p>AUTOMATIC CLOCK AND CALENDAR UPDATE FUNCTIONS, BEEPER ALARMS</p> <p>PROGRAMMED MAINTENANCE</p>
INTEGRATED INKJET MARKER	<p>PRINT DATA SETTING VIA 4,3" TOUCH SCREEN, VIA USB PENDRIVE, VIA ETHERNET</p> <p>PRINT HEIGHT MM 12,7</p> <p>PRINT OF: ALPHANUMERIC TEXTS, ALL DATE FORMATS, ALL BARCODES TYPES, INCL. CODES QR AND GS1 DATA MATRIX, GRAPHICS, ETC.</p> <p>RES: HORIZONTAL: 100-2400 DPI (VARIABLE). VERTICAL: 300 OR 600 DPI</p> <p>MULTILANGUAGE MENU</p> <p>AUTOMATIC INK PARAMETER ADJUSTMENT, INK LEVEL MONITORING</p> <p>NETWORK CONNECTION VIA TCP/IP NETWORK PROTOCOL</p> <p>INTEGRATED PROTOCOL FOR NETWORK-BASED REMOTE CONTROL</p>
COMPLIANCES	<p>DIRECTIVES 2006/42/CE; 2014/30/UE</p> <p>UNI EN ISO 11607-2:2020</p> <p>WORLD HEALTH ORGANISATION GUIDELINES</p> <p>WORLD FEDERATION FOR HOSPITAL STERILISATION SCIENCES GUIDELINES</p> <p>UNI EN 868-5</p> <p>EN ISO TS 16775</p> <p>DIN 58953-7</p> <p>UNI/TR 11408:2011</p> <p>MANUFACTURED IN A UNI EN ISO 9001:2015 QUALITY SYSTEM CERTIFIED COMPANY</p> <p>EU GMP ANNEX 1: MANUFACTURE OF STERILE MEDICINAL PRODUCTS</p>

MINIRÒ QUBE

ENGINEERED TO EXCEED THE MOST RIGOROUS STANDARDS
IN MEDICAL AND LIFE SCIENCE INDUSTRIES

TECHNICAL DATA	MINIRÒ QUBE
DIMENSIONS (NO OPTIONAL)	MM 735 x 290 x 360
WEIGHT	Kg 27
PROTECTION GRADE	IP 20
ACOUSTIC EMISSION LEVEL	LESS 70 dB(A)
OPTIONAL UPONE REQUEST	FRONT SUPPORT TRAY ROLL CONVEYOR LABEL PRINTER SECURESCAN BARCODE CONVEYOR BELT WITH SPEED SYNCHRONIZED TO THE HEAT SEALER MOTORIZED WHEELED STAND
CONVEYOR BELT WITH SPEED SYNCHRONIZED TO THE HEAT SEALER	PROTECTION GRADE: IP 20 RUBBER BELT WIDTH: MM 300 AISI 304 STAINLESS STEEL FRAME; SANDBLASTED ALUMINIUM END UNITS TRANSPORT RUBBER BELT COMPLIANT FDA
MOTORIZED WHEELED STAND	WEIGHT: KG 80 PROTECTION GRADE: IP 20 AISI 304 STAINLESS STEEL FRAME ELECTRIC HEIGHT-ADJUSTABLE ALUMINIUM SUPPORT COLUMN ADJUSTMANT: VERTICAL - ELECTRIC THROUGH BUTTONS TILT - 0°-90° MANUAL THROUGH HANDWHEEL (OPTIONAL) MAX LOAD CAPACITY = KG 60

E&OE
Technical modifications reserved 04/2026

MINIRÒ QUBE UDI-READY SEALING

STAY AHEAD IN MEDICAL AND PHARMACEUTICAL PACKAGING